

# HEAVY GAUGE COLOR OPTIONS

- 7/8" Corrugated
- Standing Seam
- Board & Batten
- 7.2" Box Rib
- Trim
- Soffit
- Flushwall

# HEAVY GAUGE COLOR OPTIONS

- 7/8" Corrugated
- Standing Seam
- Board & Batten
- 7.2" Box Rib
- Trim
- Soffit
- Flushwall

# HEAVY GAUGE COLOR OPTIONS

- 7/8" Corrugated
- Standing Seam
- Board & Batten
- 7.2" Box Rib
- Trim
- Soffit
- Flushwall

# LIGHT GAUGE COLOR OPTIONS

- 3' Tuf-Rib
- Soffit
- Trim
- 2 1/2" Corrugated
- PBR



ENVIRONMENTALLY SMART COLORS — Designed Energy Efficient

ENVIRONMENTALLY SMART COLORS — Designed Energy Efficient

ENVIRONMENTALLY SMART COLORS — Designed Energy Efficient



WHITE \*+      PARCHMENT      LIGHT STONE \*+



IVORY      BEIGE \*+      HICKORY MOSS



WEATHERED COPPER +      DESERT BROWN \*      MEDIUM BROWN \*+



DARK BROWN \*+      LIGHT GRAY \*+      DARK GRAY \*+



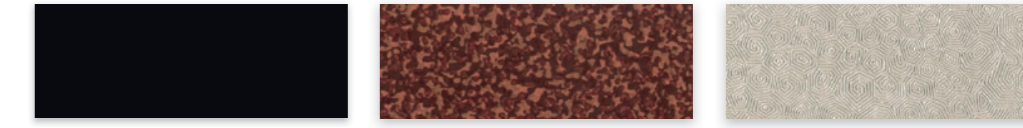
HAWAIIAN BLUE      DARK BLUE \*      TRUE RED \*



RUSTIC RED      BURGUNDY      COPPER PENNY \*\*\*



MEDIUM GREEN      DARK GREEN \*+      FOREST GREEN \*



BLACK \*+      SEDONA RUST \*\*\*      ACRYLIC COATED GALVALUME® (non-painted) \*+

**NOTE:** Color samples may vary from the actual coated product. Please obtain actual metal samples for color approval.  
 \* Delta / PBR / 2 1/2" Corrugated - Special Order Panels  
 Also Available: \* 2' Wide Panels    \*\*\* Premium color    + 26ga PBR

## SPECIAL ORDER COLORS\*\*\*



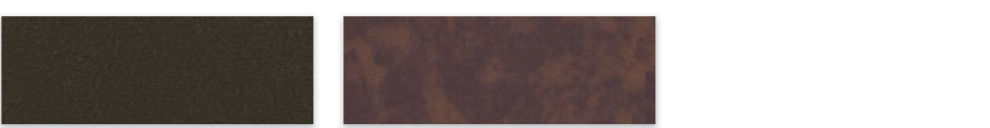
GALV-TEN RAW Weathered Color      CHAMPAGNE Metallic Color      SILVER Metallic Color



WEATHERED ZINC Metallic Color      COPPER PENNY \* Metallic Color      COPPER-TEN RAW Weathered Color

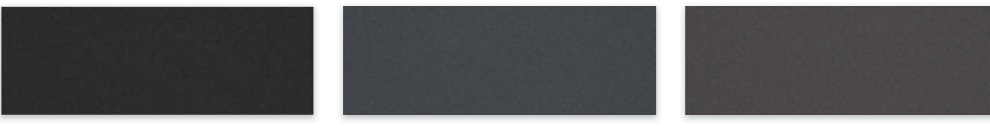


COR-TEN AZP® RAW Weathered Color      BLACK ORE      STEEL GRAY RAWHIDE Textured

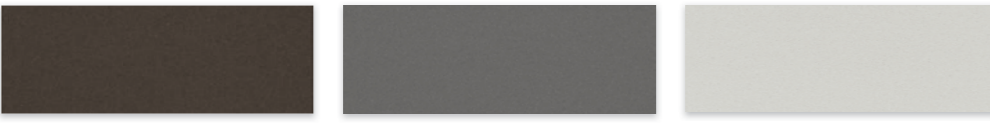


BURNISHED SLATE RAWHIDE Textured      WESTERN RUST Weathered Color

## NATURAL MATTE

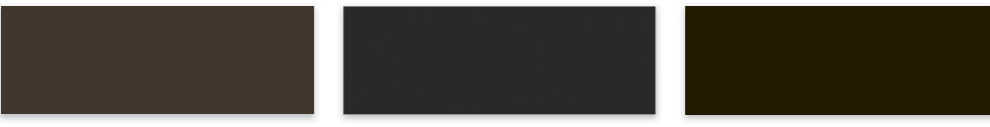


CARBON      BASALT      GRAPHITE



ORE      SHALE      FROST

## LOW GLOSS



BURNISHED SLATE      CHARCOAL      DARK BRONZE



DEEP BLACK      SLATE GRAY

**NOTE:** Color samples may vary from the actual product. Please obtain actual metal samples for color approval.

## SPECIAL ORDER COLORS\*\*\*



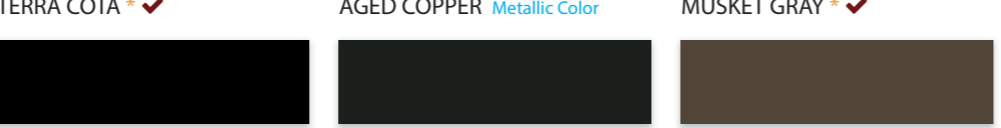
REGAL RED \*      CLASSIC GREEN \* ✓      TEAL



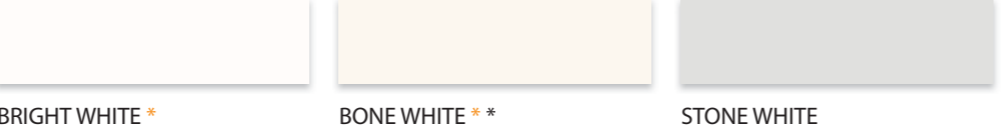
BURGUNDY \* ✓      HARTFORD GREEN \*\* ✓      ROYAL BLUE \*



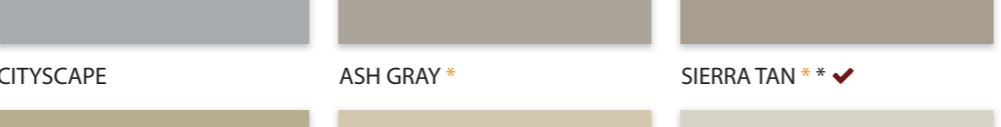
BURNISHED SLATE \* ✓      HEMLOCK GREEN      SLATE BLUE \*



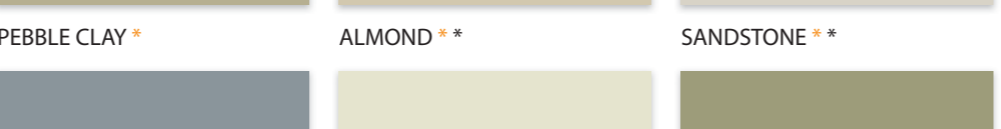
TERRA COTA \* ✓      AGED COPPER Metallic Color      MUSKET GRAY \* ✓



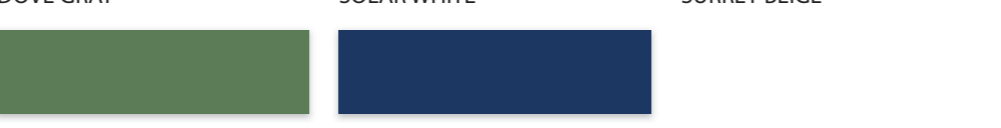
DEEP BLACK \*\*      EXTRA DARK BRONZE      MANSARD BROWN \*\* ✓



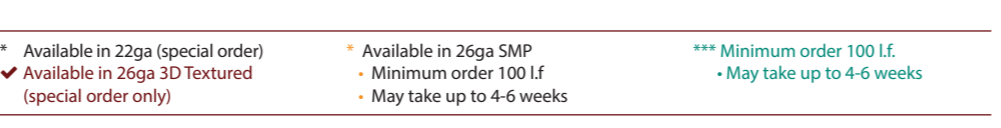
BRIGHT WHITE \*      BONE WHITE \*\*      STONE WHITE



CITYSCAPE      ASH GRAY \*      SIERRA TAN \*\* ✓



PEBBLE CLAY \*      ALMOND \*\*      SANDSTONE \*\*



DOVE GRAY      SOLAR WHITE      SURREY BEIGE

PATINA GREEN      REGAL BLUE

- \* Available in 22ga (special order)
- ✓ Available in 26ga 3D Textured (special order only)
- Available in 26ga SMP
- Minimum order 100 l.f.
- May take up to 4-6 weeks
- \*\*\* Minimum order 100 l.f.
- May take up to 4-6 weeks

Colors shown are matched as accurately as possible, but may vary slightly from finished product. These rich and vibrant colors are produced with either Kynar 500® or Hylar 5000® resins, which provide superior color retention and allow Epic Steel to offer non-prorated coating warranties for most applications. Coating warranty varies for Regal Red, Matte Black, Copper, Champagne, Silver, and Pre-Weathered Galvalume. Steelscape's Vintage carries a 20-year Finish Warranty. Please contact your representative for more information.

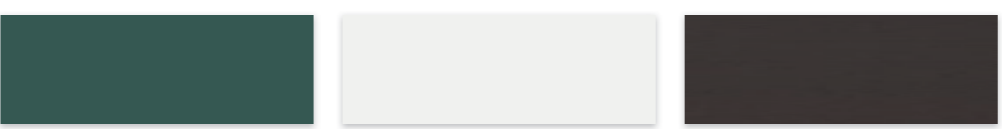
## SPECIAL ORDER COLORS\*\*\*



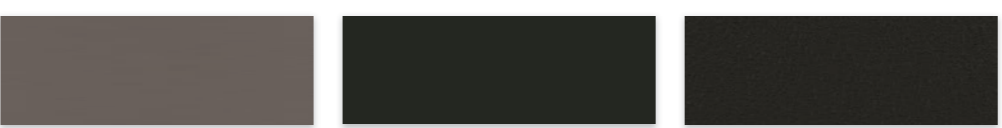
ACRYLIC COATED GALVALUME® (non-painted) \*\*      SLATE GRAY \*\* ✓      CHARCOAL GRAY \*\* ✓



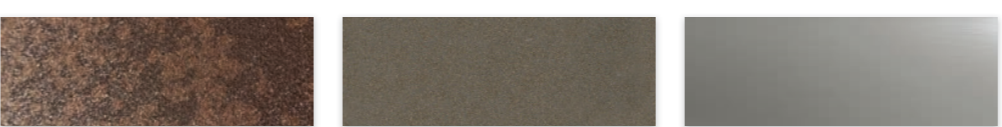
DARK BRONZE \*\* ✓      MEDIUM BRONZE \*\* ✓      COLONIAL RED \* ✓



EVERGREEN      REGAL WHITE      GUN METAL Low-Gloss



GOTHAM PATINA Low-Gloss      MATTE BLACK \*\* ✓      COAL BLACK RAWHIDE Textured



RUSTIC RAWHIDE® Weathered Color/Textured      VINTAGE®      CORE-TEN/A606® Rusting/Weathering Steel/22ga

## 26 GAUGE STOCK COLORS



BLACK      WEATHERED COPPER      DARK BROWN



LIGHT GRAY      DARK GRAY      FOREST GREEN

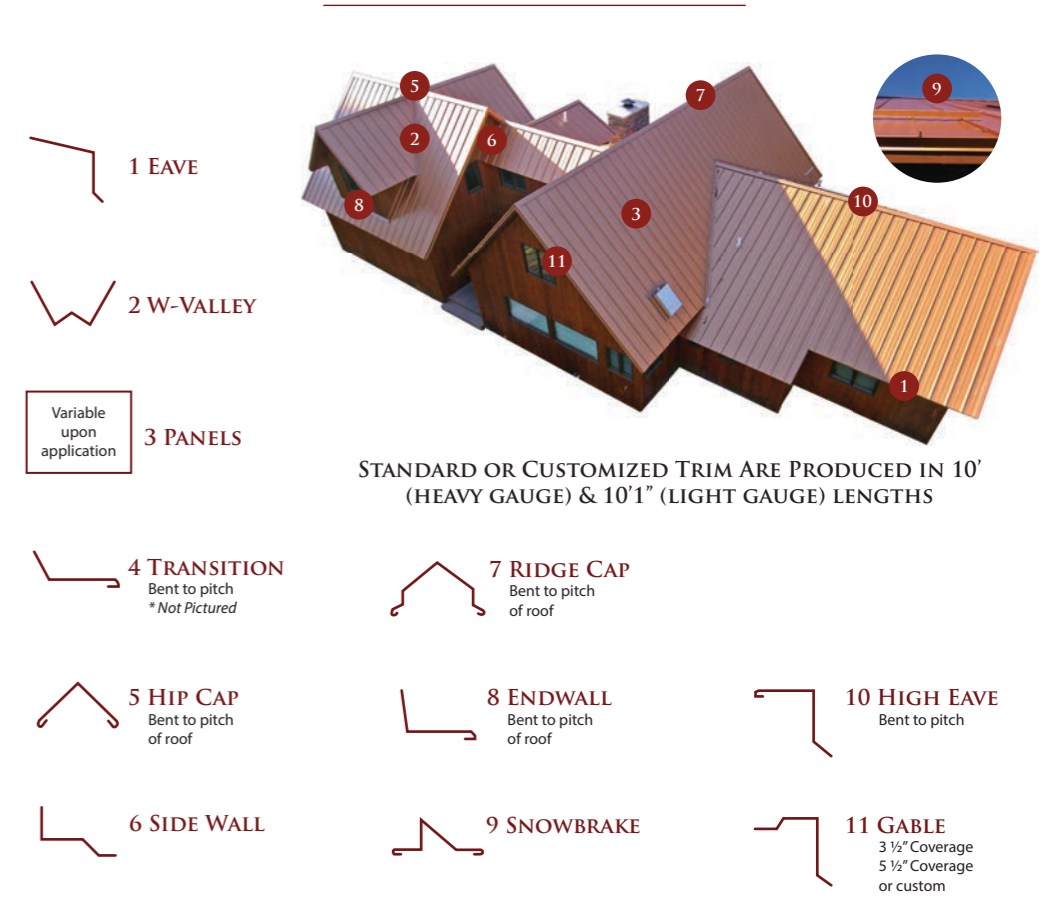


ROUGH SAWN CEDAR 20" Wide Coil Only      ROUGH SAWN CEDAR-GRAY 20" Wide Coil Only

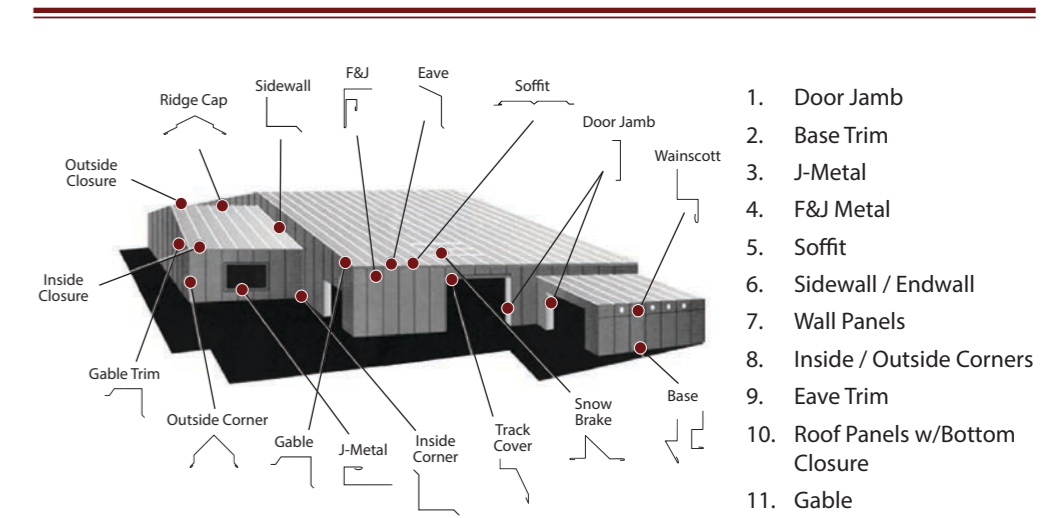
- \* Available in 22ga (special order)
- ✓ Available in 26ga 3D Textured (special order only)
- Available in 26ga SMP
- Minimum order 100 l.f.
- May take up to 4-6 weeks
- \*\*\* Minimum order 100 l.f.
- May take up to 4-6 weeks

Colors shown are matched as accurately as possible, but may vary slightly from finished product. These rich and vibrant colors are produced with either Kynar 500® or Hylar 5000® resins, which provide superior color retention and allow Epic Steel to offer non-prorated coating warranties for most applications. Coating warranty varies for Regal Red, Matte Black, Copper, Champagne, Silver, and Pre-Weathered Galvalume. Steelscape's Vintage carries a 20-year Finish Warranty. Please contact your representative for more information.

LISTED IN ORDER THAT THEY ARE INSTALLED



STANDARD OR CUSTOMIZED TRIM ARE PRODUCED IN 10' (HEAVY GAUGE) & 10'1" (LIGHT GAUGE) LENGTHS



1. Door Jamb
2. Base Trim
3. J-Metal
4. F&J Metal
5. Soffit
6. Sidewall / Endwall
7. Wall Panels
8. Inside / Outside Corners
9. Eave Trim
10. Roof Panels w/Bottom Closure
11. Gable
12. Top Closure
13. Ridge Cap

35-40 YEAR PAINT WARRANTY ON ALL PANEL SYSTEMS

### 3' TUF RIB

### 2 1/2" CORRUGATED

### SOFFIT

### PBR PANEL

### 7/8" CORRUGATED

### 7.2" BOX RIB

### FLUSHWALL

### BOARD AND BATTEN

### NAIL STRIP

Available in: 1", 1.5", & 1.5" rib height  
(for more width & height options please see EPICsteelcorp.com)

### SNAP LOCK

Available in: 1", 1.5", & 1.75" rib height  
(for more width & height options please see EPICsteelcorp.com)

### MECHANICAL LOCK

Available in: 1", 1.5", & 2" rib height  
(for more width & height options please see EPICsteelcorp.com)

### 3' Tuf Rib

<b>Std Ridge Cap</b> paint	<b>Gable</b> paint	<b>Eave</b> paint	<b>Endwall</b> pitch & paint	<b>Sidewall</b> paint	<b>Outside Corner</b> paint	<b>Inside Corner</b> paint	<b>J-Metal</b> paint	<b>Base/Drip</b> paint
-------------------------------	-----------------------	----------------------	---------------------------------	--------------------------	--------------------------------	-------------------------------	-------------------------	---------------------------

### 2 1/2" Corrugated (Special Order)

<b>Std Ridge Cap</b> paint	<b>Gable</b> paint	<b>Eave</b> pitch	<b>Endwall</b> pitch & paint	<b>Sidewall</b> paint	<b>Outside Corner</b> paint	<b>Inside Corner</b> paint	<b>J-Metal</b> paint	<b>Base/Drip</b> paint
-------------------------------	-----------------------	----------------------	---------------------------------	--------------------------	--------------------------------	-------------------------------	-------------------------	---------------------------

### PBR Panel (Special Order)

<b>Std Ridge Cap</b> paint	<b>Gable</b> paint	<b>Eave</b> pitch	<b>Endwall</b> pitch & paint	<b>Sidewall</b> paint	<b>Outside Corner</b> paint	<b>Inside Corner</b> paint	<b>J-Metal</b> paint	<b>Base/Drip</b> paint
-------------------------------	-----------------------	----------------------	---------------------------------	--------------------------	--------------------------------	-------------------------------	-------------------------	---------------------------

### 7/8" Corrugated

<b>Std Ridge Cap</b> paint	<b>Gable</b> paint	<b>Eave</b> pitch	<b>Endwall</b> pitch & paint	<b>Sidewall</b> paint	<b>Outside Corner</b> paint	<b>Inside Corner</b> paint	<b>J-Metal</b> paint	<b>Base/Drip</b> paint
-------------------------------	-----------------------	----------------------	---------------------------------	--------------------------	--------------------------------	-------------------------------	-------------------------	---------------------------

### 7.2" Box Rib

<b>Std Ridge Cap</b> paint	<b>Gable</b> paint	<b>Eave</b> pitch	<b>Endwall</b> pitch & paint	<b>Sidewall</b> paint	<b>Outside Corner</b> paint	<b>Inside Corner</b> paint	<b>J-Metal</b> paint	<b>Base/Drip</b> paint
-------------------------------	-----------------------	----------------------	---------------------------------	--------------------------	--------------------------------	-------------------------------	-------------------------	---------------------------

### Trim Styles (compatible with all EXCEPT Standing Seam)

<b>Lower Transition</b> pitch & paint	<b>Upper Transition</b> pitch	<b>Double Track Cover</b> paint	<b>Single Track Cover</b> pitch	<b>Mini Door Jamb</b> paint	<b>Std Door Jamb</b> paint	<b>Open Jamb</b> paint	<b>Snow Stop</b> pitch	<b>W-Valley</b> pitch
--	----------------------------------	------------------------------------	------------------------------------	--------------------------------	-------------------------------	---------------------------	---------------------------	--------------------------

### Board and Batten

<b>Flat Base</b> paint	<b>Inside Corner</b> Use with Z or J Bar 1" open hem	<b>Outside Corner</b> Use with Z or J Bar 1" open hem	<b>J-Bar (No Hem)</b> paint	<b>J Metal (Full Return)</b> paint	<b>Wainscot</b> paint	<b>Square Base</b> paint	<b>Z Bar</b> paint	<b>L Base/Drip</b> paint
---------------------------	--	---	--------------------------------	---------------------------------------	--------------------------	-----------------------------	-----------------------	-----------------------------

### Standing Seam

<b>Hip Ridge</b> paint	<b>Box Gable</b> paint	<b>Z-Bar Gable</b> 1" Open Hem	<b>High Eave</b> paint	<b>Eave</b> pitch	<b>Style-D Eave</b> paint	<b>W-Valley</b> paint	<b>Locking Valley</b> paint	<b>Endwall</b> pitch & paint
---------------------------	---------------------------	-----------------------------------	---------------------------	----------------------	------------------------------	--------------------------	--------------------------------	---------------------------------

<b>Box Sidewall</b> paint	<b>Locking Sidewall</b> 1" Open Hem	<b>Upper / Lower Transition</b> pitch & paint	<b>Locking Transition</b> 1" Locking Hem	<b>Chimney / Skylight Flashing</b> 1" Locking Hem	<b>J-Metal</b> paint	<b>J-Bar</b> panel & paint	<b>Z-Bar</b> paint	<b>Offset Cleat</b> paint
------------------------------	--	--	---	--	-------------------------	-------------------------------	-----------------------	------------------------------