

# **COATED METALS GROUP**

Bozeman, MT  
(406) 316-3201

Charlotte, NC  
(704) 672-5325

Denver, CO  
(303) 623-5333

Detroit, MI  
(313) 586-0199

Indianapolis, IN  
(317) 890-1999

Madison, WI  
(608) 826-5000

Minneapolis, MN  
(763) 561-5000

Nashville, TN  
(615) 712-6525

Phoenix, AZ  
(602) 254-7700

Salt Lake City, UT  
(801) 590-9992

[WWW.CMGMETALS.COM](http://WWW.CMGMETALS.COM)



# COATED METALS GROUP

WWW.CMGMETALS.COM

## STANDARD COLOR CHART

Cool coatings with premium heat-reflective technology from Dura Coat.

Durapon 70™ Full Strength 70% PVDF and Dura Coat XT40S™ Siliconized Polyester (SMP) Pre-Finished Steel Flat Sheets & Coil.

\* Metallic Color

\*\* Premium Finish



Deep Black



Matte Black



Charcoal Gray



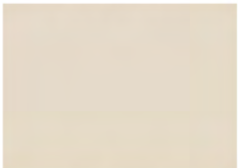
Musket Gray



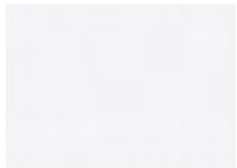
Slate Gray



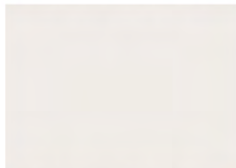
Ash Gray



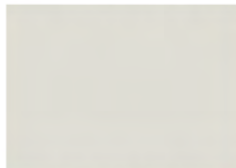
Almond



Bright White



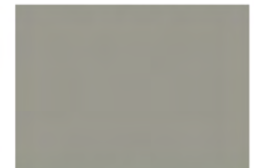
Bone White



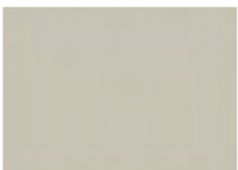
Stone White



Cityscape



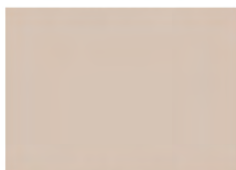
Pebble Clay



Sandstone



Sierra Tan



Antique Ivory



Medium Bronze



Dark Bronze



Extra Dark Bronze



Regal Red



Colonial Red



Burgundy



Terra Cotta



Mansard Brown



Burnished Slate



Hartford Green



Classic Green



Hemlock Green



Teal



Slate Blue



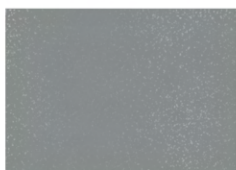
Royal Blue



Galvalume Plus



\*Copper Penny



\*Weathered Zinc



\*Silver Metallic



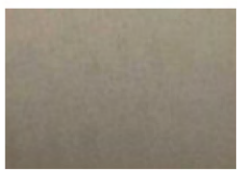
\*Champagne



\*Aged Copper



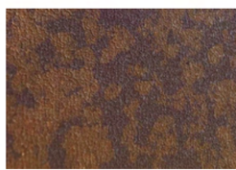
\*\* Black Ore



\*\* Vintage



\*\* Western Rust



\*\* Rustic Rawhide



\*\* Custom Color

## TEX3D SMP Finishes

Cool coatings with premium heat-reflective technology and tactile textured finish from Dura Coat. Dura Coat XT40S™ Siliconized Polyester (SMP) Pre-Finished Steel Flat Sheets & Coil.

\* Metallic Color  
\*\* Premium Finish



Matte Black



Charcoal Gray



Musket Gray



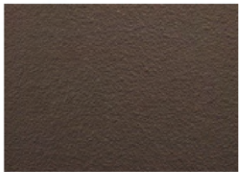
Slate Gray



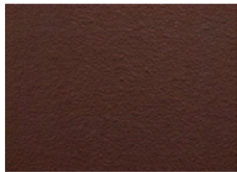
Dark Bronze



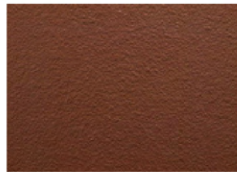
Burnished Slate



Mansard Brown



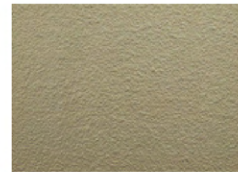
Burgundy



Colonial Red



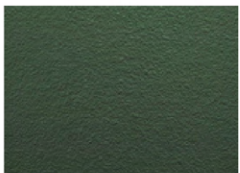
Terra Cotta



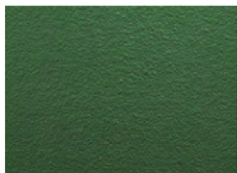
Sierra Tan



Medium Bronze



Hartford Green



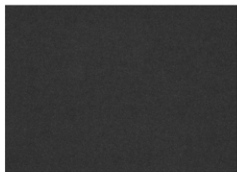
Classic Green

## Ultra Low Gloss PVDF Finishes

Cool coatings with premium heat-reflective technology and Ultra Low-Gloss, Low-Sheen technology from Dura Coat. Dura Coat Durapon 70™ Full-Strength 70% PVDF Pre-Finished Steel Flat Sheets & Coil.



Deep Black



Carbon



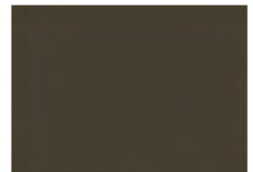
Charcoal Gray



Slate Gray



Dark Bronze



Burnished Slate



Iron Ore

*Metal samples and additional custom colors are available upon request. Please refer to the Stock Availability matrix for gauge, width, and paint finish availability.*

*Oil canning is an inherent part of light gauge cold-formed metal products and is not cause for coil, sheet, or panel rejection. Protective film must be removed immediately after installation. Color and sizes can change without notice. Additional sizes, gauges, and colors may be available, please contact your local sales representative for more information.*

*Colors represented on this electronic chart may not exactly match actual material. All colors should be verified using actual metal samples. Mismatch of electronic representations and actual material shall not be accepted as cause for rejection. Many finishes are production batch-specific and may result in slight variations in visual match. Do not mix or use materials purchased from separate sales orders on individual projects. Visual variation between separate order batches used on individual projects shall not constitute cause for rejection or claim.*





# COATED METALS GROUP

WWW.CMGMETALS.COM

Color Name	ULTRA-COOL RATINGS			22 ga.	24 ga.		24 ga. ULG		26 ga.		26 ga. TEX3D		28 ga.
	Reflect	Emiss	SRI	48"	40"	48"	40"	48"	40"	48"	40"	48"	42"
Acrylic Coated Galvalume	N/A	N/A	N/A	•	•	•			•	•			•
Aged Copper	26.80%	0.85	26		•	•							
Almond	61.40%	0.83	72	•	•	•				•			•
Antique Ivory	N/A	N/A	N/A							•			•
Ash Gray	49.80%	0.85	56			•				•			
Black Ore	8.00%	0.9	4		•	•							
Bone White	67.60%	0.84	81	•	•	•				•			•
Bright White	67.80%	0.84	81			•				•			
Burgundy	27.10%	0.85	26		•	•			•	•	•	•	
Burnished Slate	25.10%	0.83	33		•	•	•	•	•	•	•	•	
Carbon	5.80%	0.85	0				•	•					
Champagne	47.20%	0.8	51			•							
Charcoal Gray	25.30%	0.84	23	•	•	•	•	•	•	•	•	•	•
Cityscape	45.20%	0.87	51		•	•							
Classic Green	30.50%	0.85	30		•	•			•	•	•	•	•
Colonial Red	33.20%	0.86	35		•	•			•	•	•	•	•
Copper Penny	43.90%	0.84	48		•	•				•			
Dark Bronze	27.70%	0.85	27	•	•	•	•	•	•	•	•	•	•
Deep Black	26.70%	0.84	25	•	•	•	•	•	•	•			•
Extra Dark Bronze	N/A	0.88	-2		•	•							
Hartford Green	27.10%	0.83	25	•	•	•			•	•	•	•	•
Hemlock Green	31.10%	0.85	31		•	•							
Iron Ore	26.90%	0.85	26				•	•					
Mansard Brown	26.00%	0.85	25	•	•	•			•	•	•	•	•
Matte Black	26.80%	0.84	25	•	•	•			•	•	•	•	•
Medium Bronze	30.90%	0.86	31	•	•	•			•	•	•	•	•
Musket Gray	34.80%	0.83	35		•	•			•	•	•	•	
Pebble Clay	43.40%	0.84	47							•			•
Regal Red	38.50%	0.85	41			•				•			
Royal Blue	26.80%	0.85	26		•	•				•			
Rustic Rawhide	31.00%	0.88	32			•							
Sandstone	59.70%	0.82	69	•		•							
Sierra Tan	45.80%	0.83	50	•	•	•				•	•	•	•
Silver	55.60%	0.81	63		•	•							
Slate Blue	32.80%	0.84	33		•	•				•			
Slate Gray	37.50%	0.82	38	•	•	•	•	•	•	•	•	•	•
Stone White	65.60%	0.82	77			•							
Teal	27.90%	0.85	27		•	•							
Terra Cotta	41.90%	0.83	45			•				•	•	•	
Vintage	30.00%	0.7	22		•	•							
Weathered Zinc	38.30%	0.85	41		•	•							
Western Rust	24.00%	0.87	23		•	•							

